

NZSL Alphabet

HAVE FUN WITH YOUR WHANAU, FAMILY AND FRIENDS. LEARN YOUR NAME AND TEACH OTHERS THEIRS!



NOTE: In NZSL we don't sign the word 'is' in a sentence. Just sign 'my name', then fingerspell your name.



Deaf Education.

→ 1/3 per 1000 births - various hearing impairments.

→ Today more children in mainstream

→ ^{100%} Early diagnosis through screening at very young age.

→ = early access to intervention specialists.

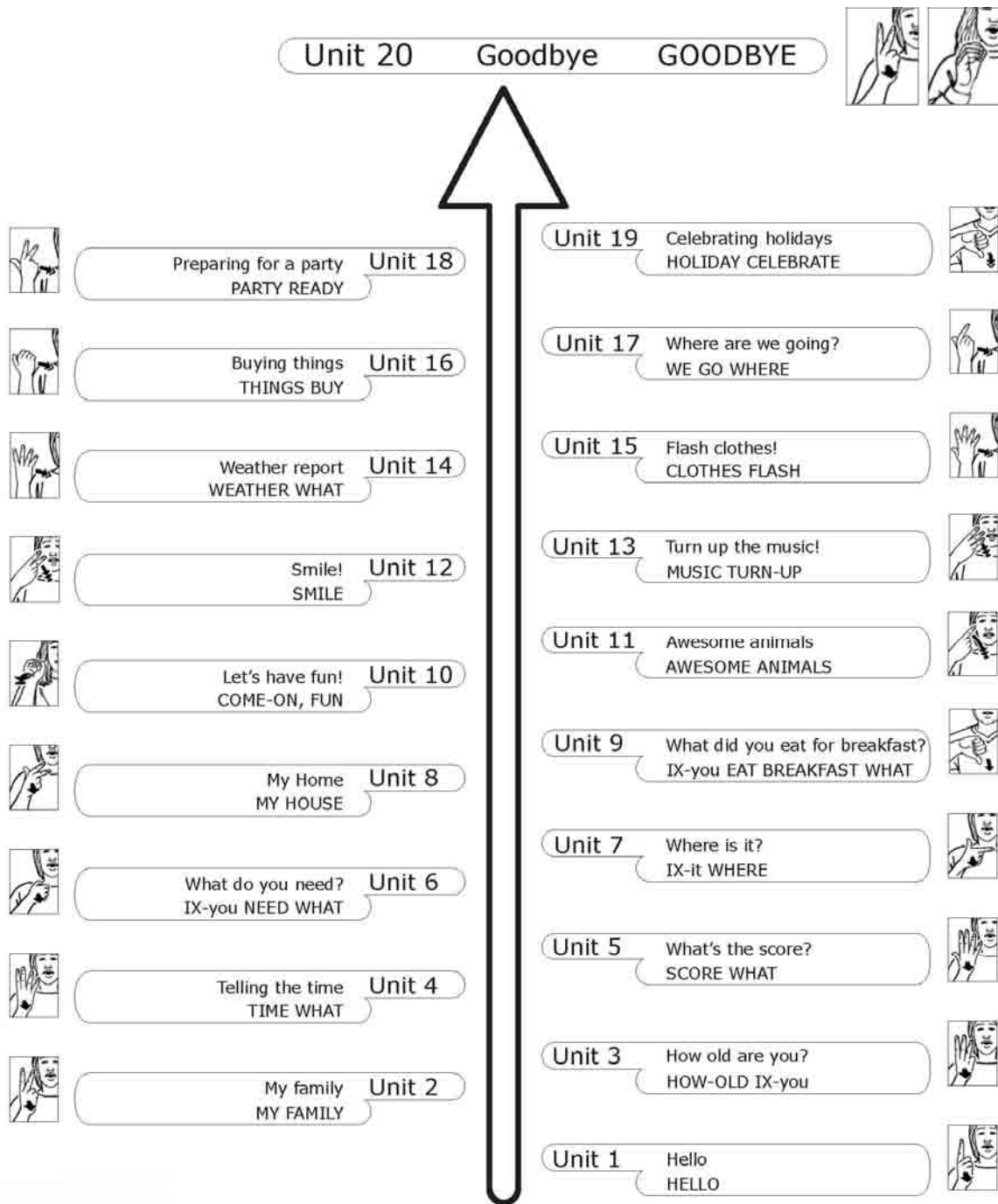
Every child's condition/issue are different. Very diverse group.

As a teacher need to open, open to advice/help, build relationship with student + whānau. No question is ever too small, dumb, etc.

- Tips
- Information in advance for deaf student so they can read before class
 - Make sure info stays up long enough for them to copy down.



Name _____



E.L.L. English Language Learners

ESOL on line
(T.K.T.)

wide range - diverse background -

The ability the child cannot enter the classroom until it has entered the consciousness of the teacher -

ESOL - M, & Co Booklets -
- assessment for parents - handbook

BICS - Basic Intercommunication Skills
(1-2 year to master)
Basic conversational skills

CALP - Cognitive Academic Language Proficiency
More specialist language (includes content as well as language)

[Code of Practice: relates solely to International Students -]

Immersion - daunting for child!

+ Little input - + Oracy oracy oracy!

+ Guided Reading / + Writing, + High expectations

+ ^{literacy} Making connections to their L1 & Elaborate + expand.

+ Manipulative Materials

* Repeat with variety = Being explicit.

* Scaffolding - a clear learner centred edge

* Turn tables -